



Reef & Rainforest



IN SEARCH OF THE GHOST CAT ——— GROUP TOUR

DATES: 24 JAN TO 2 FEB 2025

MAXIMUM GROUP SIZE: 8 GUESTS WITH A TOUR LEADER

ITINERARY

24 JAN 2025:

Arrive in Delhi early morning. You will be received at the airport by our representative and shall be taken to your hotel. Depending on when you arrive, we have organised a half day sightseeing tour of Delhi in the afternoon. This evening with the group assembled, meet your tour leader. Overnight at Roseate House, Delhi.

25 JAN 2025:

This morning you make your way into the upper Himalayas. A morning flight will get you from Delhi to Leh in Ladakh. Our team shall receive you at the airport and shall transfer you to your hotel. The remainder of the day is spent here acclimatising. Overnight at The Grand Dragon Hotel, Leh.

26 JAN 2025:

This day too is dedicated to acclimatising, though some excursions are planned for you today. Early this morning attend the morning prayers at Thiksey Monastery. This shall be followed by a hike (1-2hrs) to Gotsang, for the Hemis Monastery. Overnight at The Grand Dragon Hotel, Leh.

27 - 30 JAN 2025:

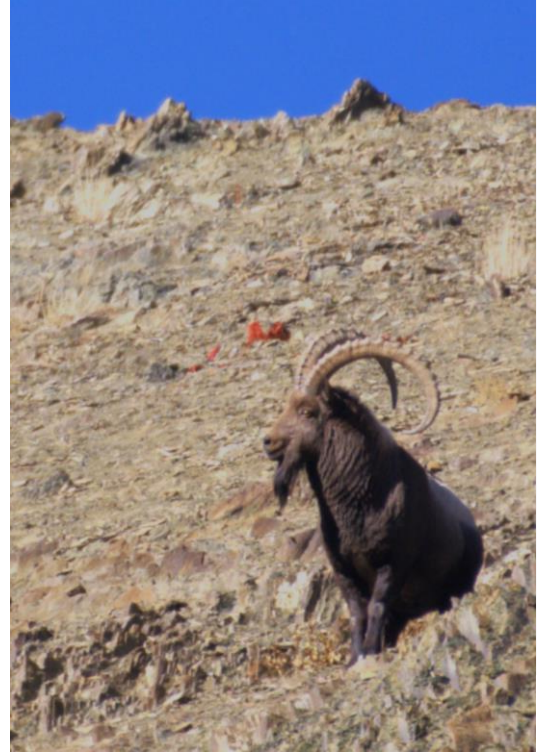
On 27th morning transfer by road to Ulley (2.5hrs). Once settled into Shan at Uley lodge spend the remainder of the day exploring and searching for wildlife. The typical flow of a day at Shan at Uley is:

6:30am

Spotters and trackers go out early morning exploring the landscape for wildlife.

8 - 8:30am

You travel to the location where spotters are seeking wildlife. The tour leader and the lodge team coordinates with the spotters over walkie talkies to find the best spot to get the group. The wildlife one seeks here is the snow leopard, Tibetan wolf, red fox, Ladakh urial, ibex, blue sheep, pika,



ITINERARY

27 - 30 JAN 2025:

woolly hare, along with birds such as the golden eagle, lammergeier, red-billed chough, alpine chough, Himalayan snowcock, Tibetan partridge, and chukar to name a few.

Lunch

Usually, one returns to the lodge for lunch, however, based on the wildlife viewing the tour leader can discuss with the group and take a call if they will return to the lodge or stay back and lunch be brought up to the group.

3pm

If one was to return to the lodge for lunch, you begin seeking wildlife again around 3pm till sundown. Overnight at Shan at Uley, Ulley.

31 JAN 2025:

This morning is your last day exploring and searching for the Himalayan wildlife found here. After a morning excursion, you'll return to the lodge and later depart for Leh. En route one could explore Alchi monastery and Pathar Sahib Gurudwara.

Overnight at The Grand Dragon Hotel, Leh.

1 FEB 2025:

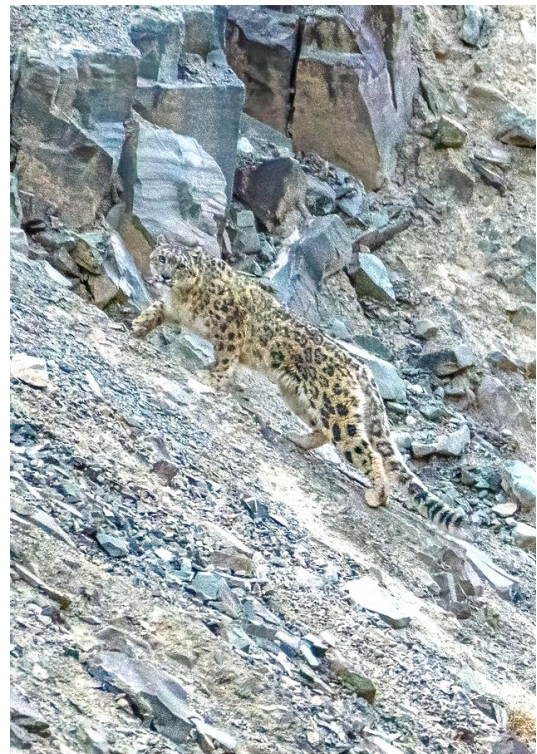
This morning after an early breakfast transfer to the airport and catch a flight back to Delhi. Our team shall receive you at the airport and transfer you to your hotel. No activities are planned on this day to allow you to unwind before catching your flight back home / continuing onwards on an extension tour that you might have planned.

Overnight at Roseate House, Delhi.

2 FEB 2025:

Transfer to the international terminal and fly back home or continue onwards on your extension journey.

END OF THE TOUR



SHAN AT ULEY ULLEY ●



The Property and its Story

Their story began in 2011 when a group of passionate individuals came together with a shared love for wildlife and a deep appreciation for the enchanting region of Ladakh. Under the name Snow Leopard Lodge, they embarked on a remarkable journey to create a haven for wildlife enthusiasts amidst the breathtaking landscapes.

Shan at Uley represents a new chapter, where the family has taken over the lodge. Driven by their unwavering dedication to providing heartfelt hospitality, rooted in their family values and a deep connection to the land they call home.

THE GREY GHOST ●



Image by Shan at Uley



Image by Shan at Uley

LADAKH ●



SHANTI STUPA, LEH



CONFLUENCE OF INDUS & ZANSKAR RIVERS

PRICING



BROWN DIPPER

PRICE:

Price per person on sharing (max group size 8 guests): £4878
Single Room Supplement (depending on availability): On request

Accommodation:

Delhi	Roseate House	2 nights - Premier Room
Leh	The Grand Dragon Hotel	3 nights - Premier Heritage Room
Ulley	Shan at Uley	4 nights - Deluxe Room

INCLUSIONS:

- o Accommodation in India for nine (9) nights.
- o Meal plan in Ulley is on full board. Plan in Leh is on half board and in Delhi is on breakfast only.
- o Half day sightseeing on 24 Jan 2025 with an English-speaking city expert.
- o Half day of exploration in and around Leh on day 2 of acclimatization in Ladakh.
- o Four (4) days of exploration for wildlife in and around Ulley.
- o Wildlife Naturalists/ Spotters at the lodge in Ulley.
- o Scopes for sightings of wildlife at the lodge. (Sharing)
- o Museum and monastery entrances fee.
- o Inner line permit.
- o Domestic flight in economy on the following sector: Delhi - Leh - Delhi
- o All transfers will be in an AC Toyota Innova Crysta. Each vehicle seats 3 guests.
- o A local travelling naturalist.
- o All currently applicable taxes.

PRICING



Image by Shan at Uley

NOT INCLUDED:

- Any international flights or visa fee.
- Any expense of personal nature including alcoholic beverages as well as soft drinks.
- Any camera fee.
- Any unusual escalation of taxes, permit costs, fuel costs or major fluctuation in foreign exchange.