



Reef & Rainforest



TIGER QUEST IN CENTRAL INDIA ——— SMALL GROUP TOUR

DATES: 14 DEC TO 22 DEC 2024 AND 15 MAR TO 23 MAR 2025
MAXIMUM GROUP SIZE: 8 GUESTS WITH A TOUR LEADER

ITINERARY

14 DEC 24:

Arrive in Delhi early morning. You will be received at the airport by our representative and taken to your hotel. Depending on when you arrive, we have organised a half day sightseeing tour of Delhi in the afternoon. This evening with the group assembled, meet your tour leader. Overnight at Roseate House, Delhi.

15 DEC 24:

Today you make your way to central India to begin your adventure in the jungle. A morning flight from Delhi gets you into Nagpur, from where you will transfer by road to Pench Tiger Reserve. You will take your first safari this afternoon. Overnight at Pench Tree Lodge, Pench.

16-17 DEC 24:

These two days will be dedicated to exploring Pench Tiger Reserve. Pench is the park which served as the inspiration for Rudyard Kipling's Jungle Book. It is a park which offers good leopard, jackal, dhole and tiger sightings. Overnight at Pench Tree Lodge, Pench.

18 DEC 24:

After a morning safari drive in Pench you'll check-out and transfer by road to Tadoba Andhari Tiger Reserve. Overnight at Waghoba Eco Lodge, Tadoba.

19 - 20 DEC 24:

These two days will be dedicated to exploring Tadoba. Tadoba offers the best chance to seek out the Bengal tiger. Overnight at Waghoba Eco Lodge, Tadoba.

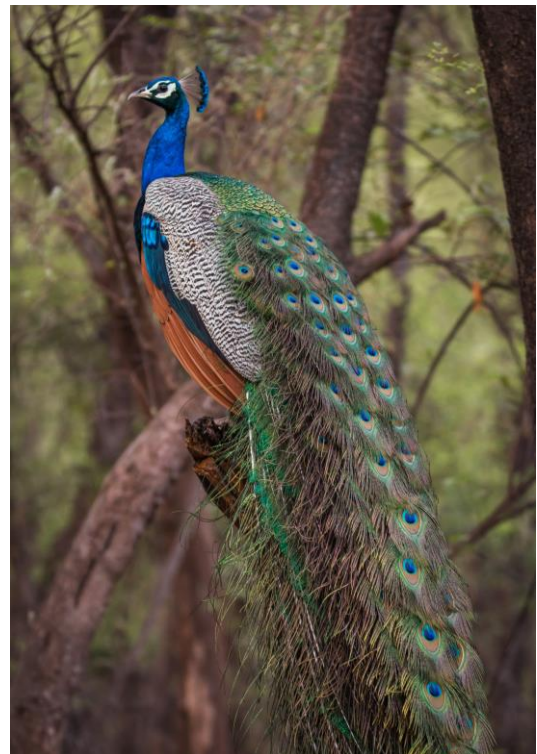
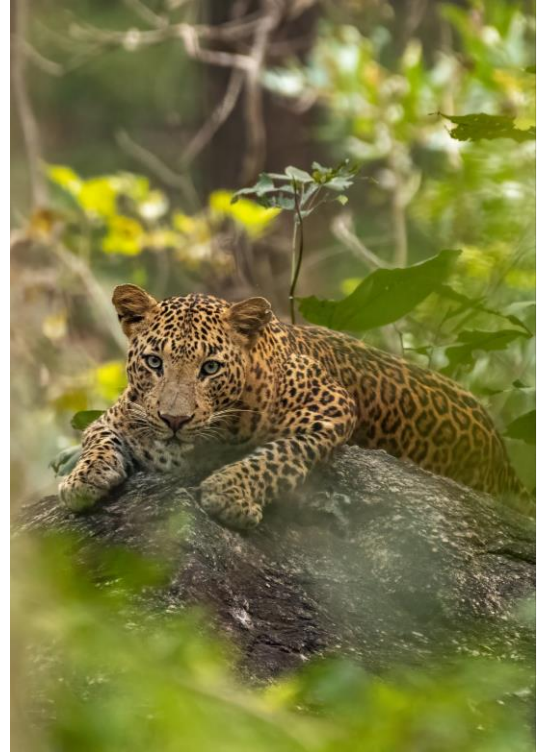
21 DEC 24:

This morning enjoy a final safari drive in Tadoba. In the afternoon transfer to Nagpur and fly back to Delhi. Overnight at Roseate House, Delhi.

22 DEC 24:

Transfer to the international airport. Fly back home.

END OF THE TOUR



PENCH TREE LODGE, PENCH ●



BREAKFAST IN THE PARK

On the days when you will have morning safaris breakfast is usually taken into the park and is enjoyed in the forest on predetermined locations identified by the forest department.

THE SAFARI

The safari vehicles in India are smaller than the ones in Africa. We thus seat not more than 4 guests (or 3 guests and an expert) in one vehicle. Depending on the group size we shall use multiple vehicles with the tour leader spending time with each guest on rotation.

WAGHOBA ECO LODGE, TADOBA ●



Guest Room



Dining Area

MELANISTIC LEOPARD

Tadoba Andhari Tiger Reserve offers a fantastic opportunity to see and photograph tigers, however, at the same time the park is also home to a melanistic leopard that can make for some very unique images.

BENGAL TIGER ●



KEY ———

SPECIES TO SEEK OUT

Even though we seek to find and photograph the tiger there are many wonderful species that call these forests home. Some interesting species to photograph when in Central India are:



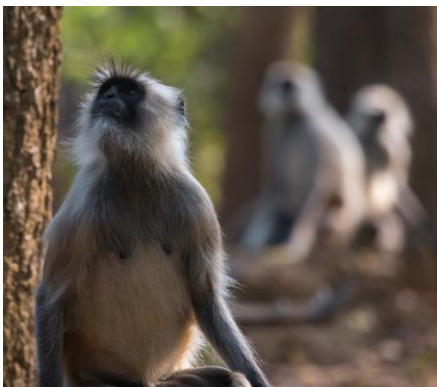
DHOLE



SLOTH BEAR



LEOPARD



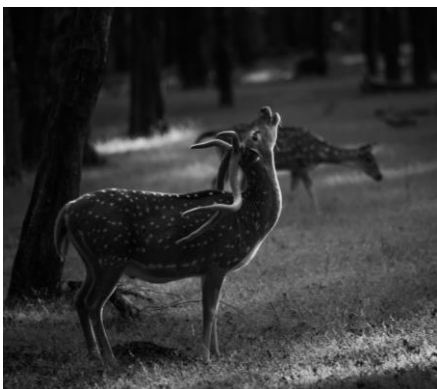
LANGUR



GAUR



SAMBAR



CHITAL



JUNGLE CAT



GOLDEN JACKAL

PRICING



PRICE:

Price per person with 6-8 guests travelling (double / twin): 14 DEC to 22 DEC 2024 - £3878 15 MAR to 23 MAR 2025 - £4208

Single Room Supplement (depending on availability): DEC 2024 - £740
MARCH 2025 - £810

HOTELS:

Delhi	Roseate House	2-nights	Premier Room
Pench	Pench Tree Lodge	3-nights	Cottage
Tadoba	Waghoba Eco Lodge	3-nights	Cottage

INCLUSIONS:

- o Accommodation in India for eight (8) nights.
- o Full board meal plan at both the lodges. Only breakfast is included in Delhi.
- o Half day sightseeing in Delhi for the group with an English-speaking guide.
- o Six (6) jeep safaris into Pench Tiger Reserve.
- o Five (5) jeep safaris into Tadoba Andhari Tiger Reserve.
- o All transfers will be in an AC Toyota Innova Crysta. Each vehicle seats 3 guests. We will have up to 3 vehicles for the group.
- o Domestic flight in economy class on Delhi - Nagpur - Delhi sector.
- o A local travelling naturalist.
- o All currently applicable taxes.

PRICING



NOT INCLUDED:

- Any international flights or visa fee.
- Any expense of personal nature including alcoholic beverages as well as soft drinks.
- Any camera fee. Tadoba attracts a camera fee of INR 300 per camera per safari.
- Any unusual escalation of taxes, permit costs, fuel costs or major fluctuation in foreign exchange.