



# Reef & Rainforest



Expertly-Led Small Group Tour

## **A Magical Overland Journey Through Madagascar**

16 Days Small Group Tour - Led by **Daniel Razafimandimby**

15 – 30 September 2026



# Reef & Rainforest

## ITINERARY IN BRIEF

- 15 Sep Arrive **ANTANANARIVO (TANA)**. Met on arrival and tfr to the hotel, close to the airport. O/n RELAIS DES PLATEAUX HOTEL, B.
- 16 Sep Morning tfr to the airport. Take domestic flight to Tulear. On arrival, tfr (c.45 minutes) north along the coast to the hotel in Ifaty. In the late afternoon and evening, explore the unique spiny forest. O/n LES DUNES D'IFATY, B, L, D.
- 17 Sep A morning excursion in the **IFATY SPINY FOREST**, followed by some time at leisure. Snorkelling is available for those interested. In the afternoon we will visit the nearby **IFATY SALT PANS** and **HONKO MANGROVE PROJECT**. Night walk in the spiny forest. O/n LES DUNES D'IFATY, B, L, D.
- 18 Sep Early departure (c 3 hours' drive) to **ZOMBITSE NATIONAL PARK** for a guided nature walk. Continue (c 1.5 hours) to **ISALO NATIONAL PARK**. Late afternoon at leisure. O/n JARDIN DU ROY, B, L, D.
- 19 Sep Day to explore **ISALO NATIONAL PARK**. O/n JARDIN DU ROY, B, L, D.
- 20 Sep A further day of exploration in **ISALO**. O/n JARDIN DU ROY, B, L, D.
- 21 Sep Tfr by road (c.4.5 hours) to the lodge. Lunch on arrival. Afternoon visit to **ANJA PARK** to see ring tailed and other lemurs. O/n BETSILEO COUNTRY LODGE, B,L,D.
- 22 Sep Drive (c.4 hours) north to **RANOMAFANA NATIONAL PARK** with stops of interest en route. Afternoon visit of the local village and spa. Night walk outside the park. O/n SETAM LODGE, B, L, D.
- 23 Sep Full day excursion to **RANOMAFANA NATIONAL PARK**. Night walk in the evening. O/n SETAM LODGE, B, L, D.
- 24 Sep Morning excursion to **RANOMAFANA NATIONAL PARK**. Afternoon at leisure or have another walk in the park. Night walk in the evening. O/n SETAM LODGE, B, L, D.
- 25 Sep Tfr (c.7 hours) north to **ANTSIRABE** with various stops en route. O/n BIRA HOTEL, B, L, D.
- 26 Sep Tfr (c.4 hours) north to Tana with stop at a local restaurant for lunch. Continue a further 4 hours by road in the afternoon to **ANDASIBE**. O/n RELAIS DE MANTADIA, B, L, D.
- 27 Sep Morning excursion to the primary rainforests of **MANTADIA NATIONAL PARK** in search of rainforest species. Afternoon to explore Perinet. Night walk for nocturnal wildlife. O/n RELAIS DE MANTADIA, B, L, D.
- 28 Sep Morning excursion in the **ANALAMAZAOTRA NATIONAL PARK**. Afternoon to explore the community managed **VOIMMA** reserve. O/n RELAIS DE MANTADIA, B, L, D.
- 29 Sep Morning to explore another rainforest reserve such as **MITSinJO**, **VOIMMA** or **PERINET** or perhaps visit Antavalobe Reserve. In the afternoon return (4 hours) to Tana. O/n RELAIS DES PLATEAUX HOTEL, B.
- 30 Sep Transfer to the airport. Depart ANTANANARIVO .



# Reef & Rainforest

Led by one of Madagascar's best local guides, this wildlife-filled small group tour is ideal for those looking to experience Madagascar most contrasting environments on an everchanging overland journey of remarkable value.

Beginning with the bizarre spiny forests of Ifaty in the far south, we then move north through the transitional and baobab forests of Zombitse to the rocky canyon lands of Isalo. Heading north again we can enjoy close encounters with ring-tailed lemurs at Anja Park to a backdrop of impressive granite mountains, before we reach the lush rainforests of Ranomafana and Kianjavato.

After some memorable sightings of the rare wildlife here we make our way back to Tana and to the wonderful species rich rainforests of Andasibe-Mantadia. Here we can enjoy a different cast of rainforest species with one of the highlights, being the largest lemur of all, the magical tail-less indri.

Accommodation is mostly of a surprisingly good standard as you visit some of the island's most highly rewarding and popular national parks.

With a maximum of ten, the group has been kept deliberately small in order to maximise wildlife viewing and access to your tour leader and local guides, who really know how and where to find the unique wildlife in their localities.

We believe you will have a wonderful trip to Madagascar in the company of like-minded fellow travellers under the watchful eye of Daniel, your expert local tour leader.



**NB: All details of the tour are subject to change to take into account operational factors. All transfer times are approximate. The itinerary works flying Ethiopian or Air France.**



## Your Group Leader: DANIEL RAZAFIMANDIMBY



With a degree in English from the University of Antananarivo and nearly two decades' worth of experience in Madagascar tourism and guiding, Daniel has always been highly regarded by our clients (see testimonials below) and is an exceptionally popular choice to lead the group.

Daniel's profound knowledge of Madagascar's wildlife and Malagasy culture combined with his natural charm and excellent spoken English will greatly enhance your knowledge of your surroundings and enjoyment of the tour. Always cheerful, patient and attentive, Daniel is bound to be a firm favourite with all the group members, as always.

*'Daniel was an excellent escort –knowledgeable, keen on wildlife and helpful.'* – Dr & Mrs M, Wiltshire

*'It was Daniel who really made our holiday special. He was very knowledgeable and took great delight in the wildlife and showing it to us: we were very happy in his company.'* - Dr A & Mrs MS, Surrey

*'Daniel in particular seemed to go out of his way to ensure that we had a good time and to tell us about Madagascar.'* – Mr CB, Middlesex

*'Our tour leader Daniel was exceptional and gave us care beyond the call of duty. He was good fun and very informative.'* – Mrs J O, Wakefield

*'Daniel was the best guide I've ever had. Really couldn't do enough for me. A very considerate person with a very genuine attitude.'* – Mr TC, Nottingham



# Reef & Rainforest

## A MAGICAL OVERLAND JOURNEY THROUGH MADAGASCAR WITH DANIEL RAZAFIMANDIMBY, 2026

Tue 15 Sep **[OWN INTERNATIONAL FLIGHT ARRANGEMENTS]** Arrive at ANTANANARIVO (TANA) IVATO INTERNATIONAL AIRPORT. Met on arrival and transfer (15 minutes) to the hotel.

O/n RELAIS DES PLATEAUX, BB. Situated about 10 minutes' drive from the airport, this comfortable three-star hotel set in exotic gardens offers well equipped, en suite rooms including air conditioning, satellite TV and mini-bar, decorated in Malagasy design using local materials. Other facilities in the hotel include a local handicraft shop, restaurant serving French cuisine and local delicacies, bar and swimming pool.



Wed 16 Sep After breakfast we transfer 15 minutes back to Tana airport to catch our TSARADIA domestic flight to TULEAR. **(Please note that the exact timing of domestic flights may to change)**. On arrival in Tulear, transfer north (45 mins) along a sandy track to the small village of IFATY, on the coast of the Mozambique Channel. Swamps en-route harbour birds such as little bittern, purple swampen and greater-painted snipe amongst herons, ducks and some waders. (Contd.../)





(2).../

(Contd.../) After some time to settle in to our hotel close to the beach, we will head into the nearby spiny forest fragment for a night walk in search of nocturnal species.

The region is especially dry as it falls within a rain shadow produced by the eastern mountain range and only receives around 500 mm of rainfall annually which has created a unique vegetation dominated by the cacti like *Didiereaceae*, or octopus, trees.

The highly localised and only recently described black-shouldered sportive lemur and both grey and grey-brown mouse lemurs can be found here.

Other nocturnal species that may be encountered include the Madagascar scops owl and nightjar, both common and hedgehog tenrecs and range of reptiles and insects including sleeping warty chameleons, Dumeril's ground boa and more. (Contd.../)



(3).../

(Contd.../) O/n DUNES HOTEL, B, L, D. One of the best hotels in Ifaty, newly refurbished, comfortable and well positioned near the spiny forest and good beaches. Ifaty has a number of diving operations where diving and snorkelling trips may be arranged (OPTIONAL – please consult the hotel staff) e.g. there is an excellent shark dive at 31 metres on the GRAND RECIFE and snorkelling at the ROSE GARDEN. The beach may not always be suitable for swimming except at high tide. At low tide it is good for observing rock pool life.



Thu 17 Sep

This morning, early transfer back into the local SPINY FOREST habitat to search for its diurnal wildlife. Birds are highlight here with a number of locally endemic spiny forest speciality species to see such as sub-desert mesite, Lafresnaye's vanga, Archbold's newtonia, Madagascar nightjar, banded kestrel, littoral rockthrush and the fantastic long-tailed ground roller all possible to see. (Contd.../)





(4).../



(Contd.../) The forest is also home to many reptiles such as the three-eyed iguanid (Chalarodon madagascariensis), the Merrem's Madagascar swift (Oplurus cyclurus) some beautiful plated lizards (*Tracheloptychus petersi*) and the blonde hognose snake and Dumeril's ground boa.



The enormous Madagascar giant swallowtail butterfly can also often be spotted feeding from the flowering bushes in the forest. The forest is also home to the rare, endangered radiated tortoise. (Contd.../)



(5).../



In the afternoon visit the HONKO MANGROVE PROJECT for a guided tour. In 2007 two marine scientists set up the Honko Mangrove Conservation and Education charity to preserve, restore and sustainably manage the mangrove ecosystem of the Bay of Ranobe.

Here you can take a leisurely and interpretative walk through the mangroves along the boardwalks observing the wildlife and learning about the different species of mangrove and their importance to the local communities. You may see several species of mudskippers, crabs, dragonflies and birds such as swamp warblers and herons. (Contd.../)



(6).../

(Contd.../) Five local villages are dependent on the mangroves and the project has enabled these local communities to develop sustainable ways of living off this natural resource. Since its foundation, the project has helped to restore a large area of mangrove forest and each year expands with more planting. Return to the hotel. O/n LES DUNES D'IFATY HOTEL, B, L, D.



Fri 18 Sep

Today we will depart early for the transfer (approx. 2.5 - 3 hours) to ZOMBITSE NATIONAL PARK. Zombitse-Vohibasia acts as a transition zone between the dry and the humid forests of Madagascar. The flora is especially rich within the protected area with bottle baobabs and several orchids particularly common. The park is home to eight lemur species, such as the Verreaux's sifaka, red-fronted brown lemur, ring-tailed lemur and the Hubbard's (Zombitse) sportive lemur. (Contd.../)





(7).../

(Contd.../) The park also supports a wide variety of interesting bird species, many of them endemic, with Zombitse's special attraction the rare Appert's tetraka which only lives in this forest and a remote montane evergreen forest at Analavelona. Other species include the white-browed owl, red-tailed and Chabert's vanga, Madagascar cuckoo roller and more. After our guided walk, we continue the drive to Isalo National Park passing the sapphire mining shantytown of Ilakaka.



Isalo National Park is a runiforme limestone massif, that contains wonderful scenery and unusual plants like the endemic 'elephant's foot' *Pachypodium rosalatum*, and is a sacred burial ground for the Bara tribe. Perhaps visit the window of Isalo in the evening.



O/n LE JARDIN DU ROY, B, L, D. The hotel, on the edge of ISALO NATIONAL PARK, blends in wonderfully with its surroundings. Luxurious for Madagascar – this is one of the best hotels in the country, using beautiful stonework throughout. There is a large swimming pool in a lovely natural setting and a wonderful restaurant offering beautifully presented European influenced food and service. Free Wi-Fi is available in the rooms but is best in the main building.



(8).../

Sat 19 Sep

Day to explore the spectacular ISALO NATIONAL PARK. The Park, a vast limestone massif, contains wonderful scenery and unusual plants like the endemic 'elephant's foot' *Pachypodium rosulatum*, and is a sacred burial ground for the Bara tribe. Trail choice to be discussed with your guide, according to the group's interests/fitness (the trails can be reasonably strenuous due to the terrain and climate). eg. Take the 4km CRÊTES (CRESTS) TRAIL for fascinating geological formations such as the Queen of the Isalo, the Wolf, the Boot, and the Tsingy of Isalo.



Or walk to the PISCINE NATURELLE (natural swimming pool) a beautiful, lush oasis fringed by pandanus trees, where one may swim in a clear freshwater pool under a waterfall. After the refreshing dip, continue the walk-through canyonland scenery to the forest of NAMAHAHA, a good place for bird watching and lemur-



spotting where ring-tailed lemurs and red fronted brown lemurs may be seen. Reward yourself with swims in the PISCINE BLEUE and PISCINE NOIRE (blue and black) natural pools before walking to your vehicle. Or drive 17km (1 hour) on a rough road and take a relatively short walk, negotiating rice paddy fields into the CANYON DES MAKIS and CANYON DES RATS to learn more about the culture and history of Isalo. Other options may be possible – discuss with your guide.





(9).../

Wildlife that may be seen includes reptiles such as the jewel, white-lined (or carpet) and Oustalets's chameleon, iguanids such as the Duméril's Madagascar swift (*Oplurus quadrimaculatus*) and skinks such as the (*Zonosaurus ornatus*) and (*Trachylepis gravenhorstii*). There are also ring-tailed and red-fronted brown lemurs and birds such as greater and lesser vasa parrots, Madagascar harrier hawk, Madagascar kestrels, buzzards, hoopoes, bee-eaters, and the localised Benson's rock thrush. O/n LE JARDIN DU ROY, B, L, D.

Sun 20 Sep A further day to explore ISALO on morning and afternoon walks. Or perhaps just relax in the afternoon before the next part of the trip. O/n LE JARDIN DU ROY, B, L, D.

Mon 21 Sep After breakfast drive north (4.5 hours – some parts of the road are in poor condition) through vast open plains that are mostly quiet, but open country bird such as Madagascar marsh harrier and Madagascar partridge, bush lark and cisticola could be spotted along the way. The scenery soon becomes impressive and more mountainous as you pass the edge of the Andringitra Massif.



After lunch at the lodge, enjoy a visit to the community-managed ANJA PARK to see groups of habituated ring-tailed lemurs, which offer good photographic opportunities and very memorable wildlife experience.

After the visit, drive a short distance to the lodge and enjoy lunch and the rest of the afternoon at leisure. O/n BETSILEO COUNTRY LODGE, B, L, D. A small lodge in beautiful surroundings offering comfortable rooms with private facilities. The lodge has a restaurant, bar and swimming pool.



(10).../

Tue 22 Sep Morning pick up from the lodge and commence the drive north (c. 4hrs) through ever-changing scenery to arrive at your lodge just outside of Ranomafana National Park. En route you will visit Ambalavao. If time allows, enjoy an afternoon / evening guided walk in the national park in search of wildlife.



O/n CENTREST HOTEL, B,L,D. This relatively new lodge is located close to the entrance of Ranomafana National Park, it offers good views to the forest. There are 18 standard rooms, each with a hot water private bathroom, fan and mosquito net and 9 family bungalows.

Wed 23 Sep Today we explore RANOMAFANA NATIONAL PARK on morning and afternoon walks in search of its wonderful rainforest wildlife. Ranomafana is an exceptionally rich montane rainforest reserve where the very rare golden bamboo lemur and eleven other lemur species are protected.



These include the critically endangered greater bamboo lemur and beautiful Milne Edwards's sifaka and red-bellied lemur. A staggering 120 endemic frog species have also been recorded within the park. **NB:** Please be aware that the trails can be steep and tough but generally the going is moderate. (Contd.../)





(11).../

(Contd.../) Over 100 bird species have been recorded in the National Park with specialities including the attractive pitta-like, short-legged and rufous-headed ground rollers, yellow-browed oxylabes, velvet and yellow-bellied sunbird asities and brown emutails. Many of these are elusive though and best seen on the high altitude Vohipara Trail.



This evening we will take a night walk along the nearby road in search of sleeping chameleons, tree boas, colourful boophis frogs and if lucky a satanic leaf-tailed gecko or the huge Madagascar comet moth. (Please bring a powerful torch). O/n CENTREST HOTEL, B,L,D.



Thu 24 Sep Another day for morning and afternoon excursions into RANOMAFANA. Perhaps enjoy a morning in the park in search of its special wildlife and relax in the afternoon.



There are different trails within the park that offer different wildlife and scenery. For example, this morning we could perhaps explore the high-altitude forest on the Vohiparara circuit, which is the best location to find the beautiful red-bellied lemur and special birds such as the endangered yellow-bellied sunbird asity, common sunbird and velvet asity and elusive cryptic warbler.

(12).../

The skulking brown mesite, rufous-headed ground roller, Pollen's vanga and white-throated and yellow-browed oxylabes can all also be found in this area. A nearby marsh holds Madagascar snipe and grey emutail and has been previously supported a population of Madagascar flufftail.

Or perhaps explore another trail within the National Park depending on the group's interests.

Enjoy another night walk in the evening, perhaps to watch rufous mouse lemurs at a nearby site where they are attracted to bananas smeared on the tree branches. O/n CENTREST HOTEL, B,L,D.



Fri 25 Sep Today we depart for a drive north (6-7 hours) to ANT SIRABE, stopping at points of interest along the way such as the woodcarving centre of AMBOSITRA, the origin of the intricate inlaid wood designs that are found throughout Madagascar. Later in the day, we will arrive at the handicraft market of Antsirabe, an attractive Hauts Plateaux spa town founded by Norwegian missionaries and noted for its rickshaws and thermal baths.

O/n BIRA HOTEL, BLD. A brand new hotel offering accommodation in comfortable rooms with air-conditioning, balconies, private bathrooms and garden views. Each room includes a desk, complimentary toiletries, and a TV. Facilities at the hotel



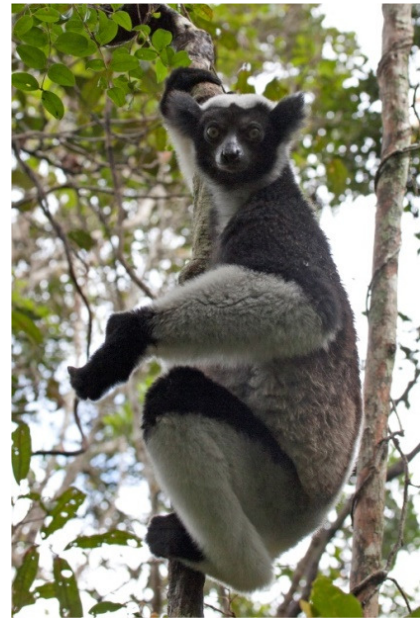
include a swimming pool, terrace, restaurant, bar, and free WiFi throughout the property.



(13).../

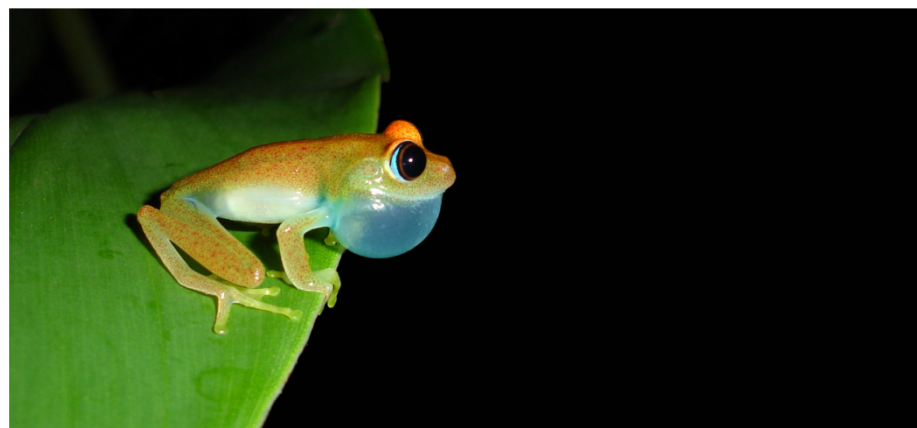
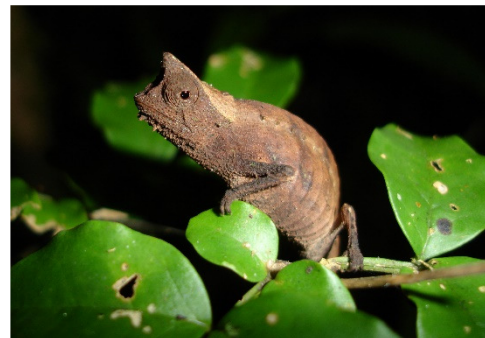
Sat 26 Sep

Today, make the journey (3.5 – 4 hours) from Antsirabe north to Tana. Stop at a local restaurant for lunch. Continue to drive (4 hours) to ANDASIBE and the PERINET RESERVE (also known as ANALAMAZAOTRA), passing through many villages and rice paddies. Perinet Reserve contains the largest lemur, the indri and seven other diurnal species, as well as many chameleons, brightly coloured day geckos and frogs.



The reserves of Andasibe are an excellent example of the eastern rainforest habitat with many nature trails. Temperatures may become quite cool, especially in the evening and early mornings. In the evening, we could explore the community-managed MITSINJO FOREST, part of Analamazaotra that receives fewer visitors than surrounding forest areas. (NB: Precise details as to which reserves are visited on certain days may change.)

An evening walk may reveal the nocturnal Goodman's mouse lemur, the eastern woolly lemur and furry-eared dwarf lemur and other wildlife that may be encountered includes pygmy (*Brookesia superciliaris*) chameleons, some endemic *Boophis* tree frogs, Madagascar tree boas, stick insects and possibly an incredibly well camouflaged leaf-tailed gecko. Please be aware that some of the trails here can be steep in places and slippery after rainfall. (Contd.../)



(14).../

(Contd.../)  
O/n RELAIS DE MANTADIA LODGE, BLD. This lodge (opened in July 2023) is the sister property of the popular Mantadia Lodge. The lodge is only a 10-minute drive from the entrance to Andasibe Reserve and an hour and a half drive from Mantadia National Park. A highlight is that the song of the indri can often be heard at dawn.



The lodge offers comfortable accommodation and facilities. The lodge has 18 rooms. The accommodation is in comfortable rooms and bungalows. Facilities in the rooms include wifi, tv, air conditioning and private bathroom. There is a lovely onsite



restaurant designed to maximise the exceptional views plus an outside terrace. There is a swimming pool in the grounds and guests can use the spa at the sister Mantadia Lodge (approx. 5-10 minute walk). Please Note, the property is built on a hillside and there are a number of steps to access the rooms, dining room etc. The property is not suitable for anyone with walking difficulties.





(15).../

Sun 27 Sep

Today we will drive 1.5 hours to the north on a bumpy track deeper into the rainforest to MANTADIA NATIONAL PARK. During the morning we will explore the park in search of the stunning diademed sifaka and the particularly agile and often very vocal black-and-white ruffed lemur. Other rainforest species we hope to encounter include the indri, red-bellied lemur, some extraordinary leaf-tail geckos, colourful day geckos and painted mantella frogs. NB: The road to Mantadia can sometimes be very hard to tackle, in which case another outing will be suggested for the group to do.



The birdlife may include the beautiful but elusive scaly, short-legged and pitta-like ground rollers, velvet asity, blue, red-fronted and red-breasted couas, Madagascar starling, Madagascar blue pigeon and Madagascar grebe to name just a few.



The walking here is a little harder than at Perinet and sometimes involves some steeper slopes but should be fine if one is fit with no mobility problems.

We will return to the hotel for lunch. In the afternoon we can explore more forest areas, or you may prefer some time at leisure. In the evening we will take another night walk along a nearby forest road before dinner. O/n RELAIS DE MANTADIA LODGE, BLD.

(16).../

Mon 28 Sep Morning walk in a community managed part of ANALAMAZAOTRA (Perinet) Reserve such as the VOIMMA RESERVE to hopefully enjoy some very close sightings of indri. The indris here are habituated and often allow a close approach and a very intimate and memorable sighting.



Other diurnal species such as the common brown lemur, eastern bamboo lemur, diademed sifaka can also be found.

With luck we will hopefully also find some chameleons including the huge Parson's and a snuffling lowland streaked tenrec.

There are also many fascinating and very odd insects to be seen such as the bizarre giraffe-necked weevil and birds such as the Madagascar starling and blue pigeon. O/n RELAIS DE MANTADIA LODGE, BLD.





(17).../



Tue 29 Sep Have a morning walk in MAROMIZAHA RESERVE (or another one) with picnic lunch. Opened in 2019. The park is about 20 minutes by car from the village of Andasibe and covers a forested area of 2880 hectares. The park is known for its orchids which bloom almost all year long. As for lemurs, indri, bamboo lemur, diademed sifaka, red bellied lemur and brown lemur are all present. There are also three groups of black and white ruffed lemur and many bird species.

In the afternoon we will transfer (4 hours) back to TANA with perhaps stops at points of interest en route. On arrival back in Tana we will check in to our hotel. O/n RELAIS DES PLATEAUX, BB.

Wed 30 Sep **[OWN INTERNATIONAL FLIGHT ARRANGEMENTS]** Pick up from the hotel and transfer to the airport.

---

Minimum group size is 6, maximum 10 plus the tour leader.

Departure Dates from the UK	Adult Price	Single Supplement
14 September 2026	£3,448	£1,098

International flights are not included. You are welcome to arrange your own international flights or we can provide a quote for you.

We would recommend flights with Ethiopian Airlines or Air France.

Please call 01803 866965 if you have any queries, would like to secure your place on the tour, and/or if you would like to extend the tour to include other locations in Madagascar.

## 300km







# Reef & Rainforest

## IMPORTANT NOTES TO ACCOMPANY THE ABOVE ITINERARY

NB: This itinerary involves some long overland transfers, some of which will be over rough bumpy and unsurfaced roads. The overland transfers however will add to your experience of Madagascar and enable you to see much more of the country and its different landscapes and culture.

NB: This itinerary involves walking along rainforest trails which can be steep and slippery (especially in Ranomafana) in places as well as some walks in hot conditions in Isalo National Park. Although all walks within the parks and reserves will be taken at a leisurely pace, the tour is not suitable for those with mobility problems.

NB: The above itinerary and its quoted price are based on specific hotels and lodges. Should there be insufficient availability at the time of booking, or if the lodges over-book their rooms (Madagascar hotels/lodges are notorious for this) alternative hotels and lodges of a similar standard may have to be booked instead, in which case the itinerary and/or price may change.

NB: Prices are based on specific airlines and specific seating classes. The price may change if those are not available at the time of booking. We strongly advise booking early to secure the prices quoted, particularly as the seating classes quoted for are usually the first to be filled.

NB: The quoted price for the above itinerary is based on current airline fares (both international and domestic), fuel surcharges and flight taxes. These (and other tour costs) may be subject to unanticipated increases beyond our control at short notice, either before or after you have booked the tour, in which case the price would need to be revised accordingly.

NB: Prices are based on standard rooms unless otherwise stated in the itinerary. Should you wish to upgrade please let us know.

NB: All itineraries are subject to change without notice to take into account possible airline flight schedule changes which can take place before the departure date or during the tour, and other operational factors.

NB: Once the tour has been booked and a deposit paid, any further changes initiated by the client may be subject to additional charges.

NB: Inclusive tours and excursions as stated in the itinerary will have been pre-paid. Once full payment has been made and/or clients are actually at their destination, should clients be disinclined to partake of any inclusive tour or excursion, no refunds will be possible.

NB: Some service providers may require that guests sign an indemnity waiver form and may refuse services if these forms are not signed. Reef and Rainforest Tours cannot give refunds for services not provided due to a refusal to sign such forms.

NB: Excursions marked as 'Optional' are not included in the price.

NB: This tour involves some travel in remote areas. This adds to the adventure and increases the opportunity to enjoy a true wildlife experience. However, due to terrain, weather, road conditions, and other factors beyond our control, some elements of the tour may have to be altered. Times of some activities may need to be changed or even cancelled due to the conditions. If an activity is cancelled it will usually be replaced with an alternative activity that is more appropriate for the conditions. Advance notice will be given for any changes where possible, although at times changes may need to be made whilst the tour is in progress.

NB: With any trip involving wildlife it is impossible to guarantee a sighting, but each trip is designed around known habitats. Every effort will be made to ensure a sighting, but cannot be held responsible if no sighting is made due to the wildlife itself, weather, or any other elements beyond our control.

NB: Despite recent improvements, Madagascar still has some accommodation of a lower standard than that normally expected by western travelers, and a precarious infrastructure including unreliable domestic flights, poor telecommunications and bad roads. Many of our tours visit areas well off the beaten track, and therefore far from medical and other services. Trails can often be arduous and slippery, and campsites are usually very basic. Bookings will only be accepted on the understanding that the client accepts Reef and Rainforest Tours has done everything in its power to ensure there are no difficulties, but has no control over standards of some equipment, available accommodation and services, airline reservation policies, flight schedule changes or possible breakdowns in communication in Madagascar.

NB: Before and after booking, clients must familiarise themselves with current UK Foreign and Commonwealth Office (FCO) travel advisories so as to satisfy themselves as to the suitability of the destination(s) to be visited in this itinerary. All decisions relating to the tour will be based on UK FCO advisories, and not those of any other countries' governments. In the event of any emergency or other problem encountered in the destination, it is advisable if appropriate to contact the local UK Embassy, High Commission or Consulate for assistance. The FCO in London also has dedicated telephone call centres: Crisis Management Dept - 0207 008 5335 (during UK office hours), and Global Response Centre - 0207 008 1500 (out of UK office hours).

NB: Adequate insurance cover is mandatory. Please supply us with details of your cover.

NB: It is a condition of booking that full travel insurance including Emergency Medical Repatriation is taken out by each person travelling. Your insurance cover must also include Missed Departure and/or Missed Flight Connection for both outbound and return flight sectors (such cover might be subject to a small additional premium – please confirm with your insurers). We ask that you send us a photo/fax/electronic copy of your policy document together with the 24hr medical assistance telephone number issued by your insurer.

NB: Flight timings are subject to change. Air Madagascar schedules are particularly unreliable and can affect itineraries and connections. Please do not rely on the timings in this itinerary. Check 24hrs before flying (your guide/hotel should be happy to assist).

NB: Visas are now easily obtainable on arrival for EU residents (35 Euros per person at time of writing but subject to change without notice). PLEASE CHECK THE LATEST INFORMATION WITH YOUR LOCAL EMBASSY/CONSULATE.

NB: Tips/gratuities are payable locally.

NB: In some hotels, English will be spoken either badly or not at all.



---

## Reef and Rainforest Tours Ltd.



A7 Dart Marine Park, Steamer Quay, Totnes, Devon, TQ9 5AL, UK  
Tel: ++ 44 (0)1803 866965 Websites: [www.reefandrainforest.co.uk](http://www.reefandrainforest.co.uk)  
E-mail: [mail@reefandrainforest.co.uk](mailto:mail@reefandrainforest.co.uk)

