



Reef & Rainforest



Expertly-Led Small Group Tour

The Wildlife of Northern Madagascar's Magical Forests and Reefs

14 Days Small Group Tour - Led by **Daniel Razafimandimby**

14 October - 27 October 2026



ITINERARY IN BRIEF

- 14 Oct Arrive **ANTANANARIVO (TANA)**. Met on arrival and transfer to the hotel, not far from the airport. O/n AU BOIS VERT, B.
- 15 Oct Morning pick up from the hotel and transfer by road (c.4 hours) to **ANDASIBE**. Evening to explore the community managed VOIMMA FOREST. O/n RELAIS DE MANTADIA, BLD.
- 16 Oct Morning and afternoon excursion to the primary rainforests of **MANTADIA NATIONAL PARK** in search of rainforest species, with packed lunch. Night walk for nocturnal wildlife. O/n RELAIS DE MANTADIA, BLD.
- 17 Oct Morning excursion in the **ANALAMAZAOTRA NATIONAL PARK**. Afternoon transfer back to TANA. O/n AU BOIS VERT, B.
- 18 Oct Morning pick up from the hotel and transfer to the airport. Catch MADAGASCAR AIR flight to DIEGO SUAREZ. Met and transfer to the hotel. Afternoon to explore Montagne D'Ambre National Park. O/n LITCHI TREE, BLD.
- 19 Oct Morning and afternoon guided walk in search of wildlife. Evening walk to see nocturnal species. O/n LITCHI TREE, BLD.
- 20 Oct Morning pick up from the lodge and transfer BLACK LEMUR CAMP. Afternoon guided walk in search of wildlife. O/n AKIBA LODGE, BLD
- 21 Oct Morning and afternoon guided walks in search of wildlife. O/n AKIBA LODGE, BLD.
- 22 Oct Pick up from the lodge and transfer by road to ANKARANA SPECIAL RESERVE. Evening walk in search of nocturnal species. O/n ANKARANA LODGE, BLD.
- 23 Oct Morning and afternoon guided walks in ANKARANA SPECIAL RESERVE in search of wildlife. O/n ANKARANA LODGE, BLD.
- 24 Oct Morning pick up from the lodge and transfer by road to ANKIFY. Transfer by boat to NOSY BE. Met and transfer by road to the hotel. O/n L'HEURE BLEUE, BD.
- 25 Oct Walk to Les Baleines Rand'eau Office for 0815 and check in for humpback whale excursion, including a visit to Nosy Sakatia for lunch and snorkelling. Return to NOSY BE and walk back to the lodge. O/n L'HEURE BLEUE, BLD.
- 26 Oct Walk to Les Baleines Rand'eau Office for 0815 and check in for a MARINE SEA SAFARI. Return to NOSY BE and walk back to the lodge. O/n L'HEURE BLEUE, BLD.
- 27 Oct Morning at leisure. Later, pick up from the lodge and transfer to the airport. Depart NOSY BE.



Reef & Rainforest

Led by one of Madagascar's best local guides, this wildlife-filled small group tour is ideal for those looking to experience Madagascar most contrasting environments on an everchanging overland journey of remarkable value.

Appealing to wildlife enthusiasts with an adventurous spirit, this small group itinerary aims to reveal to you some of Madagascar's most weird and wonderful animals. It will be a rewarding journey of great variety – both scenically and for the breadth of wildlife encountered. You will experience rainforest, tsingy pinnacles and sweeping Indian Ocean beaches. Search for the world's largest and smallest species of lemur and chameleon (and many in between) as well as the strange, expertly camouflaged leaf-tailed gecko and vividly coloured day geckos and rare birds – during the tour, please bear in mind the staggering fact that most of what you will see can be found nowhere else on earth.



Areas visited include ANALAMAZAOTRA, MANTADIA and MONTAGNE D'AMBRE NATIONAL PARKS for diverse rainforest habitats; ANKARANA NATIONAL PARK for peculiar *tsingy* karst geology and dry deciduous tropical forest; and the lovely L'HEURE BLEUE LODGE on NOSY BE. Plenty of wildlife – lemurs, birds, reptiles, amphibians, invertebrates - will be seen in all the various locations and parks visited. During your time on Nosy Be, two private boat trips have been included - one to admire the acrobatics of humpback whales and the other to (hopefully) snorkel with whale sharks.

The group size has been kept deliberately small (maximum 10 people) to afford good wildlife-viewing, give best access to your leader and guides and encourage congenial camaraderie as you share exciting experiences with other like-minded people. A reasonable level of fitness is essential for your enjoyment as some of the walks – although taken at an easy pace to suit the group and to facilitate good wildlife watching – can be strenuous due to the terrain and climate.

NB: All details of the tour are subject to change to take into account operational factors. All transfer times are approximate. The itinerary works flying Ethiopian Airlines

Your Group Leader: DANIEL RAZAFIMANDIMBY



With a degree in English from the University of Antananarivo and nearly two decades' worth of experience in Madagascar tourism and guiding, Daniel has always been highly regarded by our clients (see testimonials below) and is an exceptionally popular choice to lead the group.

Daniel's profound knowledge of Madagascar's wildlife and Malagasy culture combined with his natural charm and excellent spoken English will greatly enhance your knowledge of your surroundings and enjoyment of the tour. Always cheerful, patient and attentive, Daniel is bound to be a firm favourite with all the group members, as always.

'Daniel was an excellent escort – knowledgeable, keen on wildlife and helpful.' – Dr & Mrs M, Wiltshire

'It was Daniel who really made our holiday special. He was very knowledgeable and took great delight in the wildlife and showing it to us: we were very happy in his company.' - Dr A & Mrs MS, Surrey

'Daniel in particular seemed to go out of his way to ensure that we had a good time and to tell us about Madagascar.' – Mr CB, Middlesex

'Our tour leader Daniel was exceptional and gave us care beyond the call of duty. He was good fun and very informative.' – Mrs J O, Wakefield

'Daniel was the best guide I've ever had. Really couldn't do enough for me. A very considerate person with a very genuine attitude.' – Mr TC, Nottingham



Reef & Rainforest

THE WILDLIFE OF NORTHERN MADAGASCAR'S MAGICAL FORESTS AND REEFS, OCTOBER 2026

14 Oct **[OWN INTERNATIONAL FLIGHT ARRANGEMENTS]** Arrive

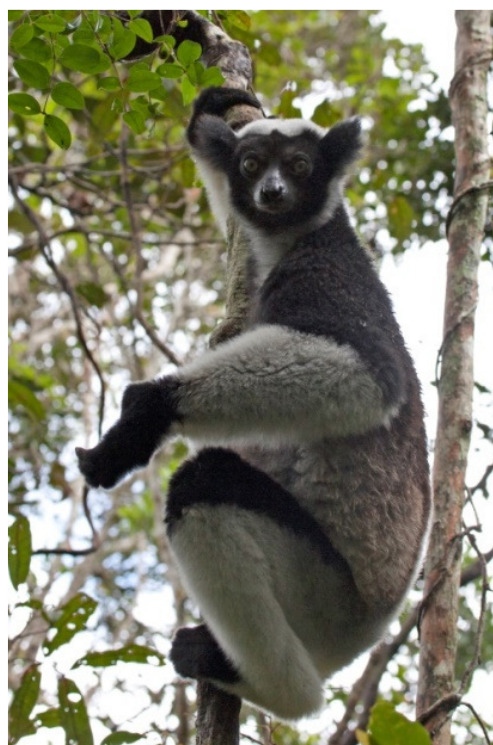
ANTANANARIVO (TANA) IVATO INTERNATIONAL AIRPORT. Met and transfer to your hotel in town. O/n AU BOIS VERT, B. Located a short drive from the airport and set in 3 hectares of peaceful and attractive gardens, accommodation is in rooms constructed with tasteful use of natural materials dominated by chunky wood and granite. All rooms have private bathroom, satellite TV and safe. Facilities at the hotel include a swimming pool and a restaurant serving local and international cuisine.



15 Oct

Morning pick up from the hotel and transfer by road (c 4 hours) to ANDASIBE and the PERINET RESERVE (also known as ANALAMAZAOTRA), passing through many villages and rice paddies. Perinet Reserve contains the largest lemur, the indri and seven other diurnal species, as well as many chameleons, brightly coloured day geckos and frogs.

The reserves of Andasibe are an excellent example of the eastern rainforest habitat with many nature trails. Temperatures may become quite cool, especially in the evening and early mornings. In the afternoon and evening, explore the community managed VOIMMA FOREST RESERVE, part of Analamazaotra, managed by the association of guides that offers excellent wildlife watching. (Contd.../)

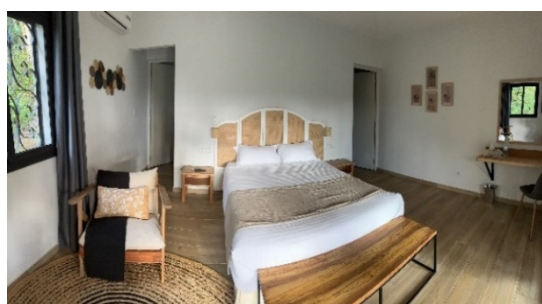


(2).../

(Contd.../) An evening walk may reveal the nocturnal Goodman's mouse lemur, the eastern woolly lemur and furry-eared dwarf lemur and other wildlife that may be encountered includes pygmy (*Brookesia superciliaris*) chameleons, some endemic *Boophis* tree frogs, Madagascar tree boas, stick insects and possibly an incredibly well camouflaged leaf-tailed gecko. Please be aware that some of the trails here can be steep in places and slippery after rainfall.



O/n RELAIS DE MANTADIA LODGE, BLD. This lodge (opened in July 2023) is the sister property of the popular Mantadia Lodge. The lodge is only a 10-minute drive from the entrance to Andasibe Reserve and an hour and a half drive from Mantadia National Park. A highlight is that the song of the indri can often be heard at dawn.



The lodge offers comfortable accommodation and facilities. The lodge has 18 rooms. The accommodation is in comfortable rooms and bungalows. Facilities in the rooms include wifi, tv, air conditioning and private bathroom. There is a lovely onsite restaurant designed to maximise the exceptional views plus an outside terrace. There is a swimming pool in the grounds and guests can use the spa at the sister Mantadia Lodge (approx. 5-10 minute walk). Please Note, the property is built on a hillside and there are a number of steps to access the rooms, dining room etc. The property is not suitable for anyone with walking difficulties.



16 Oct

Today we will drive 1.5 hours to the north on a bumpy track deeper into the rainforest to MANTADIA NATIONAL PARK. During the morning we will explore the park in search of the stunning diademed sifaka and the particularly agile and often very vocal black-and-white ruffed lemur. Other rainforest species we hope to encounter include the indri, red-bellied lemur, some extraordinary leaf-tail geckos, colourful day geckos and painted mantella frogs. (Contd.../)



(3).../

(Contd.../) The birdlife may include the beautiful but elusive scaly, short-legged and pitta-like ground rollers, velvet asity, blue, red-fronted and red-breasted couas, Madagascar starling, Madagascar blue pigeon and Madagascar grebe to name just a few. The walking here is a little harder than at Perinet and sometimes involves some steeper slopes but should be fine if one is fit with no mobility problems. Picnic lunch is included .



In the evening we will take another night walk along a nearby forest road before dinner. O/n RELAIS DE MANTADIA LODGE, BLD.

17 Oct

Morning walk in ANALAMAZAOTRA (Perinet) Reserve to hopefully enjoy some very close sightings of indri. The indris here are habituated and often allow a close approach and a very intimate and memorable sighting. (Contd.../)



Other diurnal species such as the common brown lemur, eastern bamboo lemur, diademed sifaka can also be found.

With luck we will hopefully also find some chameleons including the huge Parson's and a snuffling lowland streaked tenrec. (Contd.../)



(4).../

(Contd.../) There are also many fascinating and very odd insects to be seen such as the bizarre giraffe-necked weevil and birds such as the Madagascar starling and blue pigeon. Afternoon pick up and transfer back to TANA. O/n AU BOIS VERT, B.



18 Oct

Early morning pick up from the hotel and transfer to the airport. Catch Madagascar Airlines flight to DIEGO SUAREZ. (**Flight time is subject to change**) Met on arrival at the airport and transfer 45 minutes south to your lodge to drop bags and then explore MONTAGNE D'AMBRE NATIONAL PARK.

This is the oldest National Park in Madagascar and protects an isolated mount of rainforest in an otherwise semi-arid landscape. The park is home to many lemurs as well as rare birds such as Madagascar crested ibis and Madagascar pygmy kingfisher and local Amber Mountain rock thrush. Spend the rest of the day walking the trails in search of lemurs such as the beautiful crowned lemur, Sanford's brown lemur and many birds, reptiles and insects.



This reserve contains at least 11 species of chameleon (many unique to the park, including one of the tiniest of all reptiles, the Montagne d'Ambre leaf chameleon: (*Brookesia tuberculata*). This tiny species is usually only 25 to 35 mm in length when fully grown and confined to the leaf litter of the forest floor but is surprisingly easily found by the eagle-eyed local guides. (Contd.../)



(5).../

(Contd.../) Other reptiles to look out for include other members of the chameleon family such as the Boettger's chameleon and localised Amber Mountain chameleon (*Calumma amber*), giant day geckos, Madagascar ground boas and much more. In the Park's campground the inquisitive ring-tailed vontsira can often be found searching for leftovers.



There are many trails through stunning scenery, some leading to sacred waterfalls and the park is full of huge tree ferns, lianas, orchids and impressive bird's nest ferns.

Return to the lodge in the evening and once dark take a night walk along the Park's entrance track in search of possible nocturnal lemurs including the localised Montagne d' Ambre fork-marked lemur and mouse lemur alongside well camouflaged mossy and giant leaf-tailed geckos, various snakes, stick insects and other wildlife. (Contd.../)



(6).../



(Contd.../)

O/n LITCHI TREE, BLD. A small boutique hotel, located in a commanding position in Joffreville, with views over the forested landscape to the Mozambique Channel and Diego Bay, and close to the entrance of Montagne d'Ambre National Park. The six comfortable spacious rooms are set in the gardens to the rear of the main building and have private bathroom. The main building, which is the restored residence of Marshall Joffre and the French Admiralty, houses a dining room with excellent food served, a small bar, lounge. Surrounded by beautiful gardens full of mango and litchi Trees where chameleons and leaf tail geckos are regularly seen.



19 Oct Today enjoy morning and afternoon guided nature walks in MONTAGNE D'AMBRE NATIONAL PARK in search of its special fauna and flora. O/n LITCHI TREE, BLD.

20 Oct This morning set off for the approximately 3.5-hour drive to the ANDRAFIAMENA PROTECTED AREA and your accommodation at the Black Lemur Camp run by the community conservation charity FANABY. Please note the last hour of the journey is on a bumpy track from the main road to the lodge. Afternoon visit to the forest. O/n AKIBA LODGE, BLD. Accommodation is in 10 rustic chalets with private bathrooms (simple showers only), mosquito netting a flat screen TV and private balcony. There is a spacious main building with wonderful sweeping views down the valley which also houses a restaurant and bar and lounge area. Solar power is used to provide electricity and Wi-Fi 24 hours a day and the friendly staff are all employed from the local Anjahankely village.



(7).../

21 Oct

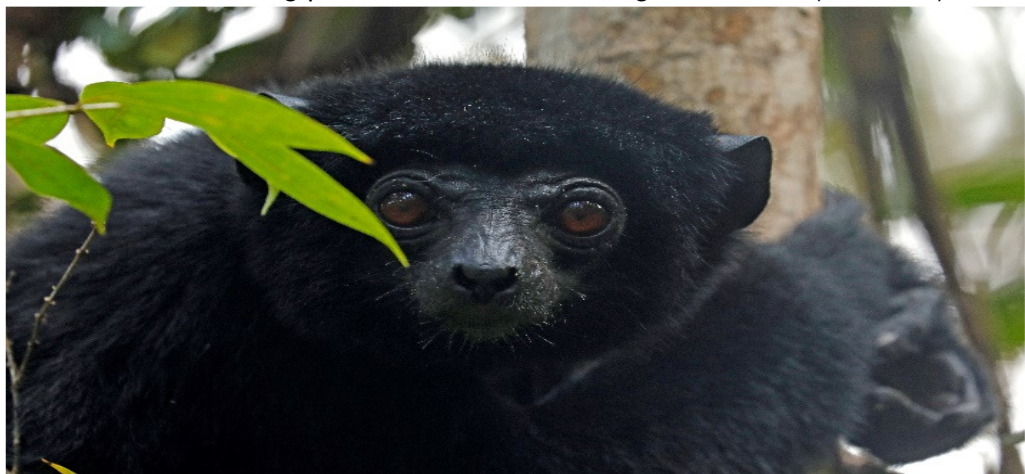
Today explore the ANDRAFIAMENA PROTECTED AREA. The reserve protects a large area of hilly, semi-humid and dry deciduous forest. This little-known wilderness is home to a good range of wildlife and a friendly and engaging rural community. The reserve is of most importance for its population of the critically endangered Perrier's sifaka, of which there are only around 250 individuals left in the wild.



The enigmatic, all black Perrier's sifaka occurs only in remote patches of northern Madagascar, where its population has been greatly reduced by ever-increasing habitat loss. There are currently no Perrier's sifakas in captivity and with the remaining population so tiny and fragmented, this beautiful and little-known species is highly threatened with extinction. The species is now listed as one of the world's top 25 most endangered primates by the IUCN. Your visit here makes a real difference to their survival though supporting the community-based conservation work of the lodge.

Explore the forest with the assistance of local guides from the village that are experts in locating habituated groups of the sifakas, so you have an excellent opportunity to see these rare lemurs.

The sifakas are usually found in an area of forest roughly 45 minutes moderately uphill walk from the lodge. Perhaps take a packed lunch out in the forest to allow more exploration of the trails, some of which lead to waterfalls and natural swimming pools, or return to the lodge for lunch. (Contd.../)



(8).../

(Contd.../) Other wildlife includes crowned lemurs, Daraina sportive lemur and various birdlife. In the heat of the afternoon, return to the lodge and perhaps take a night walk in the evening. (All meals are included today) O/n AKIBA LODGE, BLD.



22 Oct

Today set off for the approximately 2.5 – 3 hour drive (first hour on a very bumpy and rutted road), but through interesting scenery to ANKARANA SPECIAL RESERVE, a spectacular area of limestone pinnacles and sunken tropical dry deciduous forest, containing one of Madagascar's highest densities of lemurs – it must be one of the country's most exciting reserves with crowned and Sanford's brown lemurs particularly abundant.



The reserve is also home to the localised Ankarana sportive lemur which can easily be seen in day roosts in holes in trees. Enjoy an afternoon excursion in the reserve. Trails can be chosen depending on your interests/fitness.



Try to also spot the various chameleons, leaf-tailed geckos, huge ground boa constrictor and northern ring-tailed mongoose here amongst other wildlife. Birdlife includes the Madagascar harrier hawk, banded kestrel, Madagascar crested ibis, crested coua, Madagascar cuckoo roller and white throated rail. (Contd.../)



(9).../

(Contd.../) Perhaps have an afternoon hike and climb to LAC VERTE (difficult) or visit the GROTTES DE CHAUVE SOURIS bat cave which is home to hundreds of Madagascar straw-coloured bats and Madagascar Rousettes (each day's itinerary to be decided on the spot).



O/n ANKARANA LODGE, BLD. Located approximately 1 km from ANKARANA SPECIAL RESERVE, with lovely views over the savannah. The lodge has simple yet comfortable bungalows and rooms, each with air conditioning (limited hours) and private bathrooms and a small swimming pool.



23 Oct

Today enjoy a full day of guided walks in ANKARANA SPECIAL RESERVE. Please discuss your interests with your guide and he will make suggestions accordingly. O/n ANKARANA LODGE, BLD.

24 Oct

This morning set off for a drive of approximately 4 hours to ANKIFY. Pass several plantations specialising in growing different produce and make a short stop at a vanilla and cacao plantation to learn more about this industry. On arrival in Ankify continue (approx. 45 minutes) by boat to Heville on NOSY BE. (Contd.../)



(10).../

(Contd.../) On arrival in Nosy Be, transfer (approx.30 minutes) into the interior to your lodge. Enjoy the rest of the day at leisure to relax or book OPTIONAL activities locally with the hotel.

O/n L'HEURE BLEUE, BD. Situated at the quiet end of the beautiful bay of AMBATOLOAKA, the hotel has simple wooden bungalows with private bathrooms and little verandas looking towards the bay. There is a swimming pool, bar and restaurant serving set meals. AMBATOLOAKA is quite lively with a variety of



good restaurants, bars, small hotels and local agencies that can organise boat trips, bike or car hire and excursions. **Accommodation is in a simple waterfront bungalow. Room upgrades may be available here for a supplement. (Please enquire if interested)**



25 Oct

Walk along the beach (approximately 450 metres) past the Aviavy Hotel and restaurant to the Les Baleines Rand'eau Office halfway along Madirokely Beach. Please be at their office for 0815 for the check in for the shared whale shark snorkelling tour. All departures are subject to local weather conditions and minimum numbers. (Contd.../)

(11).../

(Contd.../) The principal aim will be to see humpback whales, which come to reproduce and give birth in the warm waters of Nosy Be from August to November. With sea conditions often favourable at this time of year, it is possible to see mothers accompanied by their calf, who rest in the calm waters of the bay and also the males who fight offshore to seduce the females. The boats are usually equipped with a hydrophone. If the conditions are right, there may be the opportunity to hear the whalesong.



Around 1300, stop for lunch, served on the beach of the nearby island of Nosy Sakatia, followed by an opportunity to swim and snorkel over an area of shallow seagrass home to green turtles and now a designated turtle reserve. Up to 14 huge green turtles are thought to be resident here and the warm water is clear and mostly shallow allowing for good visibility.

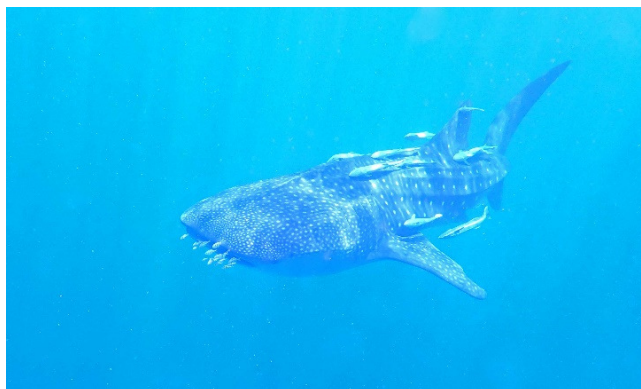


Return to Nosy Be in the mid-afternoon. On return walk back to your hotel at the other end of the bay. O/n L'HEURE BLEUE, BLD.

26 Oct

Walk along the beach (approximately 450 metres) past the Aviavy Hotel and restaurant to the Les Baleines Rand'eau Office halfway along Madirokely Beach. Please be at their office for 0815 for the check in for the whale shark snorkelling tour. All departures are subject to local weather conditions.

The principal aim will be to snorkel alongside whale sharks and other marine life. This thrilling excursion will be in a small boat (without a toilet) with all snorkelling equipment provided. The typical schedule of the excursion is that the morning is dedicated to locating, observing, and hopefully



snorkelling with whale sharks and any other marine life found. Please note that you must follow the guidelines of the skipper and local guide regarding behaviour around any marine life. (Contd.../)

(12).../

(Contd.../) The whale shark is the largest fish existing in the ocean today; they can grow up to 50 feet (15 metres) in length. It is only the smaller but still impressive juvenile whale sharks though that pass through the Bay of Nosy Be at this time of year. These sharks are around 7-10 meters in length. The whale shark prefers waters of warm surface temperature, with upwelling's of nutrient rich colder water - these conditions are favoured by blooms of plankton on which the sharks feed.



These precise conditions occur in the tropical waters around Nosy Be during October and November. This protein-rich habitat is equally ideal for giant manta and mobula rays and the subsequent food web also attracts dolphins and rare omura's whales.



The sharks feed on or just below the surface by filtering small planktonic organisms out of the water through its baleen: a built-in hair-like structure replacing teeth. Whale sharks are very docile creatures and when approached by snorkelers typically hardly notice as long as they are not touched or approached too closely (maximum distance 3 meters). Please note that the water temperature is usually warm at around 38 degrees with good visibility, but thermal hangs causing some blur to photographs can occur.

A lightweight and short wetsuit or old t-shirt and swimming shorts are advisable to help protect you from the strong sun when snorkelling and please remember to take plenty of drinking water, sun cream and sunglasses with you. During the excursion you could possibly (if lucky) encounter a pod of spinner, pantropical spotted or Indo-Pacific bottle-nosed dolphins. (Contd.../)



(13).../

(Contd.../) The elusive Bryde's whale and similar looking but only recently described Omura's whale are also both found in the area. Please note that observations and snorkelling opportunities with whale sharks are highly likely between mid-October and mid-November but cannot be guaranteed on every excursion due to the local conditions and the animals themselves.

Around 1300, stop for lunch on Baie Des Russes. After the morning at sea, you will have the opportunity to discover this protected bay on the mainland. Meal in a local restaurant by the beach. Depending on the tides, there will also be an opportunity to snorkel on one of the reefs.

Return to Nosy Be in the mid-afternoon. On return walk back to your hotel at the other end of the bay. O/n L'HEURE BLEUE, BLD.

27 Oct **[OWN INTERNATIONAL FLIGHT ARRANGEMENTS]** Pick up from the hotel and transfer to the airport.

Minimum group size is 6, maximum 10 plus the tour leader.

Departure Dates from the UK	Adult Price	Single Supplement
13 October 2026	£3,495	£995

International flights are not included. You are welcome to arrange your own international flights or we can provide a quote for you.

We would recommend flights with Ethiopian Airlines.

Please call 01803 866965 if you have any queries, would like to secure your place on the tour, and/or if you would like to extend the tour to include other locations in Madagascar.



Reef & Rainforest

IMPORTANT NOTES TO ACCOMPANY THE ABOVE ITINERARY

NB: The above itinerary and its quoted price are based on specific hotels and lodges. Should there be insufficient availability at the time of booking, or if the lodges over-book their rooms (Madagascar hotels/lodges are notorious for this) alternative hotels and lodges of a similar standard may have to be booked instead, in which case the itinerary and/or price may change.

NB: Prices are based on specific airlines and specific seating classes. The price may change if those are not available at the time of booking. We strongly advise booking early to secure the prices quoted, particularly as the seating classes quoted for are usually the first to be filled.

NB: This itinerary involves some long overland transfers, some of which will be over rough bumpy and unsurfaced roads. The overland transfers however will add to your experience of Madagascar and enable you to see much more of the country and its different landscapes and culture.

NB: The quoted price for the above itinerary is based on current airline fares (both international and domestic), fuel surcharges and flight taxes. These (and other tour costs) may be subject to unanticipated increases beyond our control at short notice, either before or after you have booked the tour, in which case the price would need to be revised accordingly.

NB: Prices are based on standard rooms unless otherwise stated in the itinerary. Should you wish to upgrade please let us know.

NB: All itineraries are subject to change without notice to take into account possible airline flight schedule changes which can take place before the departure date or during the tour, and other operational factors.

NB: Once the tour has been booked and a deposit paid, any further changes initiated by the client may be subject to additional charges.

NB: Inclusive tours and excursions as stated in the itinerary will have been pre-paid. Once full payment has been made and/or clients are actually at their destination, should clients be disinclined to partake of any inclusive tour or excursion, no refunds will be possible.

NB: Some service providers may require that guests sign an indemnity waiver form and may refuse services if these forms are not signed. Reef and Rainforest Tours cannot give refunds for services not provided due to a refusal to sign such forms.

NB: Excursions marked as 'Optional' are not included in the price.

NB: This tour involves some travel in remote areas. This adds to the adventure and increases the opportunity to enjoy a true wildlife experience. However, due to terrain, weather, road conditions, and other factors beyond our control, some elements of the tour may have to be altered. Times of some activities may need to be changed or even cancelled due to the conditions. If an activity is cancelled it will usually be replaced with an alternative activity that is more appropriate for the conditions. Advance notice will be given for any changes where possible, although at times changes may need to be made whilst the tour is in progress.

NB: With any trip involving wildlife it is impossible to guarantee a sighting, but each trip is designed around known habitats. Every effort will be made to ensure a sighting, but cannot be held responsible if no sighting is made due to the wildlife itself, weather, or any other elements beyond our control.

NB: Flight timings are subject to change. Air Madagascar (Tsaradia) schedules are particularly unreliable and can affect itineraries and connections. Please do not rely on the timings in this itinerary. Check 24hrs before flying (your guide/hotel should be happy to assist).

NB: Despite recent improvements, Madagascar still has some accommodation of a lower standard than that normally expected by western travelers, and a precarious infrastructure including unreliable domestic flights, poor telecommunications and bad roads. Many of our tours visit areas well off the beaten track, and therefore far from medical and other services. Trails can often be arduous and slippery, and campsites are usually very basic. Bookings will only be accepted on the understanding that the client accepts Reef and Rainforest Tours has done everything in its power to ensure there are no difficulties, but has no control over standards of some equipment, available accommodation and services, airline reservation policies, flight schedule changes or possible breakdowns in communication in Madagascar.

NB: Before and after booking, clients must familiarise themselves with current UK Foreign and Commonwealth Office (FCO) travel advisories so as to satisfy themselves as to the suitability of the destination(s) to be visited in this itinerary. All decisions relating to the tour will be based on UK FCO advisories, and not those of any other countries' governments. In the event of any emergency or other problem encountered in the destination, it is advisable if appropriate to contact the local UK Embassy, High Commission or Consulate for assistance. The FCO in London also has dedicated telephone call centres: Crisis Management Dept - 0207 008 5335 (during UK office hours), and Global Response Centre - 0207 008 1500 (out of UK office hours).

NB: Adequate insurance cover is mandatory. Please supply us with details of your cover.

NB: It is a condition of booking that full travel insurance including Emergency Medical Repatriation is taken out by each person travelling. Your insurance cover must also include Missed Departure and/or Missed Flight Connection for both outbound and return flight sectors (such cover might be subject to a small additional premium – please confirm with your insurers). We ask that you send us a photo/fax/electronic copy of your policy document together with the 24hr medical assistance telephone number issued by your insurer.

NB: Visas are now easily obtainable on arrival for EU residents (35 Euros per person at time of writing but subject to change without notice). PLEASE CHECK THE LATEST INFORMATION WITH YOUR LOCAL EMBASSY/CONSULATE.

NB: Tips/gratuities are payable locally.

NB: In some hotels, English will be spoken either badly or not at all.



Reef and Rainforest Tours Ltd.

A7 Dart Marine Park, Steamer Quay, Totnes, Devon, TQ9 5AL, UK

Tel: ++ 44 (0)1803 866965 Websites: www.reefandrainforest.co.uk

E-mail: mail@reefandrainforest.co.uk

